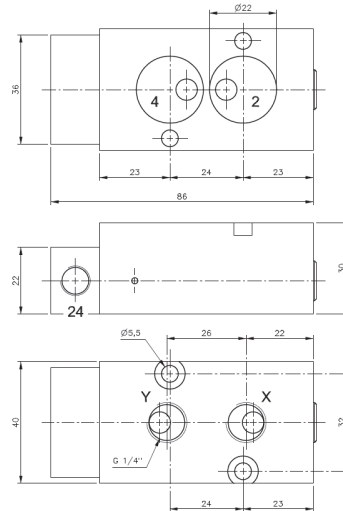
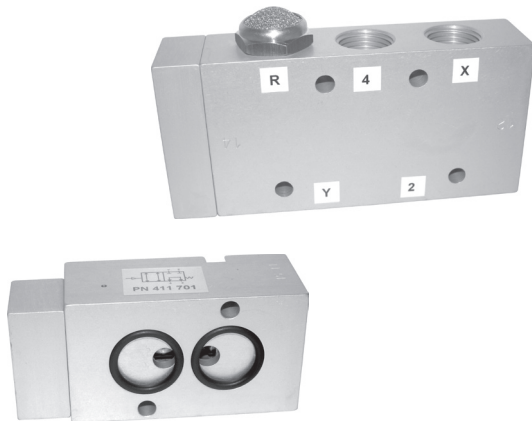
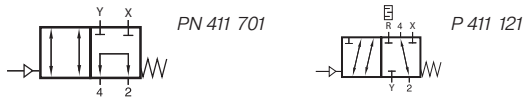


# PN 411 701/P 411 121



**PN 411 701**

The **PN 411 701** is made for direct assemblage to an actuator with 1/4" Namurinterface. It offers a 1/4" Namurinterface towards the pilot-valve (use as sandwich plate) as well as ports G 1/4" for piped application.

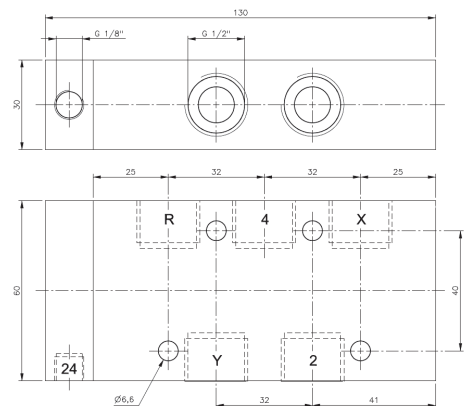
The **P 411 121** is an in-line-version for high-flow-application, ported G 1/2".

**Function:**

As long as a pneumatic signal is applied, the valve forwards the signals applied to 2 and 4 through to X and Y. When no pneumatic signal is applied the ports 2 and 4 are shortcut.

**Typical application:**

On automated process-valve equipped with a gear-box for manual actuation in case of emergency. When failure occurs, compressed air might get trapped in the actuator. Manual operation might damage the actuator. Valve assures, that the user doesn't have to close the process valve against the force of the air.



**P 411 121**

Type	Port size	Air flow	Operating press.	Actuating press.	Weight
PN 411 701	G 1/4"	1250 l/min	1,5 - 10 bar	3 - 10 bar	0,20 kg
P 411 121	G 1/2"	3000 l/min	1 - 10 bar	3 - 10 bar	0,63 kg